

***PLEASE FILL ONLY UP TO THE FILL LINE INDICATED ON THE COLLECTION TUBE. SAMPLE WILL BE REJECTED IF OVERFILLED.**

****ONLY LOOSE OR DIARRHEAL STOOLS ARE RECOMMENDED FOR ROUTINE BACTERIAL AND C. DIFFICILE CULTURES.**



Step 1

Open the kit and spread out the contents.

The contents include:

- 1 collection hat (EasySampler)
- 1 pair of disposable gloves
- 1 Para-Pak C&S system (orange top)



Step 2

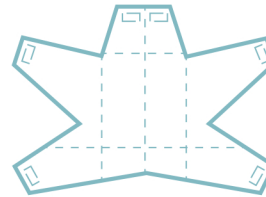
Put on disposable gloves.



Step 3

Lift toilet seat and wipe off the surface of the toilet bowl rim.

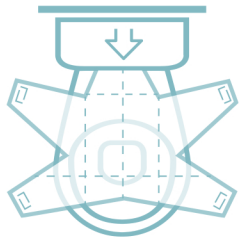
Note: Before affixing the EasySampler to the toilet bowl, bend the paper along the lines for better flexibility.



Step 4

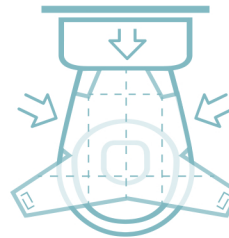
Unfold the EasySampler containing five flaps.

Orient the larger (REAR) flap towards the back of the toilet with the tape side down.



Step 5

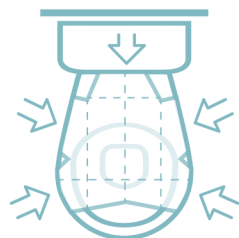
Remove the protective covering from the tape and adhere the REAR flap of the EasySampler onto the back of the toilet rim.



Step 6

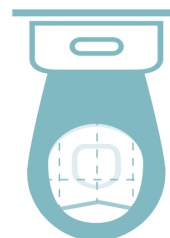
Remove the protective covering from the two MIDDLE flaps and adhere them to the outside of the toilet bowl as far back as possible.

Note: EasySampler should not touch the surface of the water.



Step 7

Remove the protective covering from the two FRONT flaps and adhere them to the outside of the toilet bowl.



Step 8

Make sure the EasySampler is taut and in the shape of a bowl. If not, re-orient the flaps for the correct positioning. Lower the toilet seat once the EasySampler is oriented correctly.



Step 9

Have a bowel movement.

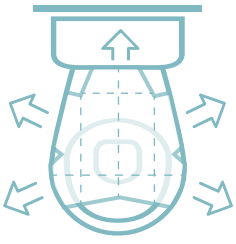
Note: Make sure stool does not come in contact with the toilet water or urine. Slowly drain urine away from bowl movement before collecting a sample if necessary.



Step 10

Collect stool sample using the scoop provided which is attached with the cap of the Para-Pak C&S tube (orange top) and add specimen to the fill line.

Note: DO NOT dispose of the liquid inside the vials. Add specimen to the red fill line but do not overfill. Recap the vial and make sure that the container is properly sealed.



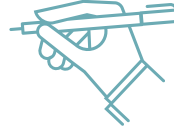
Step 11

Remove EasySampler flaps from toilet bowl and rim. Flush both the EasySampler and excess stool down the toilet.

Note: When using water saving toilets use a full flush. Repeat if necessary.



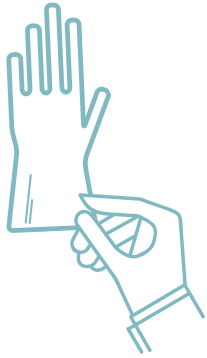
Name _____
Date of birth _____



Step 12 (* required)

Label all collection tubes appropriately with your name, date of birth, and date of sample collection.

Place ALL sample containers into the biohazard bag with absorbent material.



Step 13

Remove gloves and properly dispose of the material.

Wash hands to prevent contamination.



Step 14

Place all documents along with the biohazard bag into the shipping box.

Mail the package to laboratory as soon as possible by overnight shipment.

Rejected Sample Criteria

Accepted at fill level	Overfilled	Overfilled or/and Leaking	Containers not accepted